

# Teamcenter Requirements Integrator for RIF/ReqIF

## Manage the RIF/ReqIF standard for supplier and customer requirements exchange

### Benefits

- Comprehensive import/export capability
- Capture, manage, change and audit the evolution of externally-created product requirements across every phase in the product lifecycle
- Incorporate Six Sigma quality goals in early lifecycle stages, thereby enabling product teams to design-in quality and design-out defects
- Relate requirements to design elements, to facilitate requirements-driven design and ensure that product development programs comply with customer and marketplace expectations

### Summary

The Teamcenter® software integration with the RIF/ReqIF (requirements interchange format) standard enables you to bridge the requirements gap between you and your customers or suppliers. Teamcenter is able to receive and send requirements data across an entire program to ensure that all components of your projects are aligned and working as a collective.

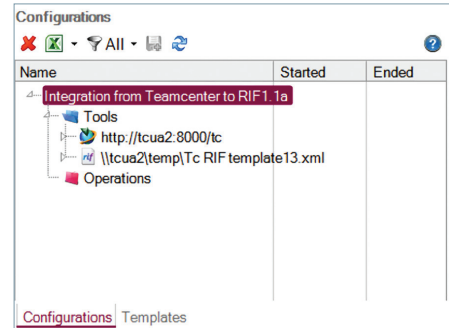
By delivering requirements to the enterprise, Teamcenter facilitates requirements-driven design, Design for Six, systems engineering and other business improvement initiatives that depend on your ability to build the voice of the customer into your product lifecycle.

### Using Teamcenter to manage product requirements created in the RIF/ReqIF format

Using the RIF/ReqIF standard has become increasingly important to integrate the voice of the customer into your Teamcenter deliverables. With a variety of different requirements tools in existence, the disparate nature of project stakeholders and an increasing need for efficiency, it has become integral to a project's success for requirements to be integrated and changes to be reflected.

The Integration understands the schema, version and content on the RIF/ReqIF documents and enables you to map and import the data into your own Teamcenter schema.

By linking your requirements to fine-grain design elements, enterprise teams are able to access, leverage and trace an auditable set of requirements that can be repeatedly updated and changed as your product lifecycle evolves.



# Teamcenter Requirements Integrator for RIF/ReqIF

## Benefits (continued)

- Accelerate take-to-market cycles by ensuring product decisions (such as requirement or design changes and their related impacts) are communicated and understood by all stakeholders

## Features

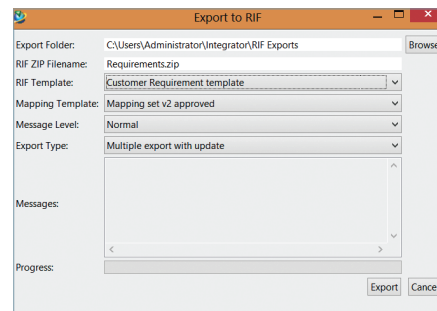
- Import data that originated in a wide variety of third-party tools
- Include externally authored items within a Teamcenter-managed PLM environment
- Traceability between the imported external data and Teamcenter data
- Change mechanism for enabling new and amended items to be synchronized or viewed
- Fine-grain requirements management for establishing performance parameter targets and performing tradeoff analyses
- Use of either a separate dedicated tool or a Teamcenter plug-in for exporting
- Map the data you want to view or send while omitting data you don't need
- Synchronization by automated service or manually initiated operations
- Design your own RIF/ReqIF schemas for maximum re-use

Teamcenter facilitates cross-discipline, closed-loop feedback by recognizing when product requirements are in danger of being violated, when changes to requirements and design elements take place and when design changes impact requirements – as well as when changed requirements impact product design.

Properties	
Quick Search...	
<b>General</b>	
Direction	Forward
<b>Operation Details</b>	
Outcome	Completed
Owner	Steve Coombs
<b>Target Tool (TcUA)</b>	
Object conflicts	0
Object errors	0
Objects created	263
Objects deleted	0
Objects moved	0
Objects skipped	0
Objects updated	0
Relation conflicts	0
Relation errors	0
Relations created	23
Relations deleted	0
Relations skipped	0
Relations updated	0

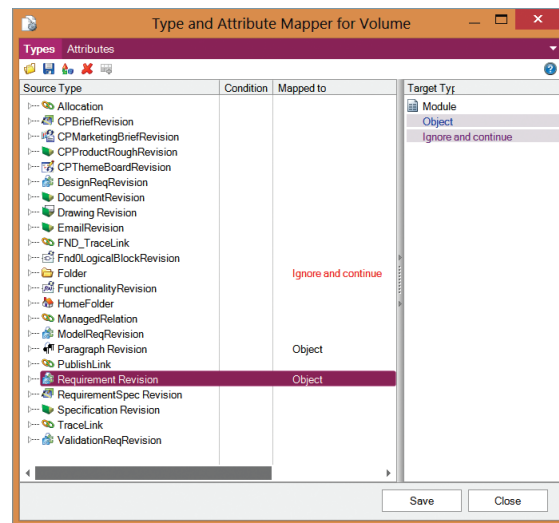
You can completely integrate customer or regulatory requirements into your deliverables ensuring that you have coverage as well as evidence to prove compliance. Your customer can change their requirements and issue a new RIF/ReqIF data set, which can then be imported to Teamcenter to create new items or revise existing items.

To manage your requirements within Teamcenter and then publish them in RIF/ReqIF standard, you simply define what data is to be shared and what properties should accompany them.



## Underlying concepts

The Teamcenter integration for RIF/ReqIF is managed by strong underlying technology that extracts the data and structures you need, and maps the schema items before exchanging and restructuring the data. This mapping set will determine what items are included on the basis of whether the data structure, known object types or certain attributes are being met.



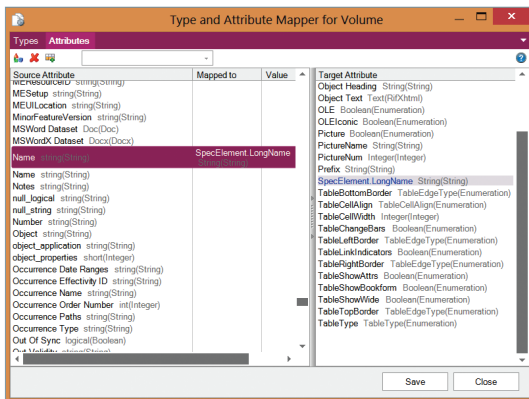
The integrity of the data is maintained by the direction of the update process; Teamcenter users are unable to update the data within RIF/ReqIF unless it is part of your integration process.

Attributes can be mapped to existing Teamcenter properties so they can be searched and reported upon within your normal Teamcenter working processes.

Any images and relations are imported as well as the structures and any attributes associated with the requirements.

Siemens supports a wide variety of different RIF versions from a variety of different tools vendors.

Changes to the RIF/ReqIF files can be imported and exported to keep the data synchronized between you and your customers or suppliers.



The integration's data import capability utilizes a business strength client server architecture to ensure your integrations are managed and controlled effectively.

An analyzer screen enables you to review imported data quickly and easily to see if there are new, amended or deleted items that have changed since the last time you performed an update against the latest RIF/ReqIF data set.

Changes also can be imported into Teamcenter. If these are new items, they will be placed at the correct hierarchical level; if they are amended objects, they become new revisions; if these are deleted items, they will not be deleted in Teamcenter. A property flag can be automatically set to determine the status of the RIF/ReqIF changes as well.

### Administration and control

The Teamcenter integration for RIF/ReqIF can be configured to support as many integration users as you need. The RIF/ReqIF Teamcenter plug-in is available within Teamcenter and can extract data into an agreed RIF/ReqIF template. A mapping set and integration templates can be re-used and shared so that all subsequent integrations conform to an established configuration.

Synchronization can be performed against a local instance of a RIF/ReqIF file or can be established against a direct FTP address for simple data transfer between you and your customers/suppliers.

Once an integration is deployed, it can be shared among different teams with different permissions ensuring that the flow of data is controlled and accessed only by those permitted.

Siemens PLM Software  
[www.siemens.com/plm](http://www.siemens.com/plm)

Americas +1 314 264 8499  
 Europe +44 (0) 1276 413200  
 Asia-Pacific +852 2230 3308

© 2017 Siemens Product Lifecycle Management Software Inc. Siemens, the Siemens logo and SIMATIC IT are registered trademarks of Siemens AG. Camstar, D-Cubed, Femap, Fibersim, Geolus, GO PLM, I-deas, JT, NX, Omneo, Parasolid, Solid Edge, Syncrofit, Teamcenter and Tecnomatix are trademarks or registered trademarks of Siemens Product Lifecycle Management Software Inc. or its subsidiaries in the United States and in other countries. All other trademarks, registered trademarks or service marks belong to their respective holders. 36796-A11 7/17 W